

JANUARY 2021

Building the Foundation for Growth.



Changes in Normality

When people start experiencing positive growth and change, they want to experience more of it” (Macdonald, 2019).

Educators and staff in childcare systems are facing so many changes and adaptation as all the society is moving forward through the pandemic. The new regulation, checklists, routines, and rhythm of the days are popping out. The educators need to adapt fast to put it into action to secure the safety of the environment for everyone present. They need to think again when doing certain activities, setting the room, presenting themselves to others. These new norms are a difficult yet critical moment for all. Macdonald mentions that “Even if you graduated five, ten years ago with a top degree,

that’s not current information that we know now... We’re learning more – literally every day, new research, new studies – about how to work with children; ... what are best practices we can do.”

Changes in normality’s toll on educators and children

The speaker also projects the idea of co-relation of educators’ life-long learning and its effect on children, school, community, and families. Educators play a vital role in this setting. Children are the one who takes the vitality. And when children grow with this vitality, it becomes a ripple effect...

[Continue reading on our Blog.](#)

Important Dates

FRI JAN 1

New Years Day!

MON JAN 4

Back to School!
Center reopens.

FRI JAN 22

Pro-D Day for Meadowbrook Elementary. OSC available.

MON FEB 1

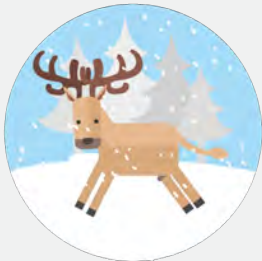
Pro-D Day for Parkland Elementary Only. OSC available.

FRI FEB 26

Pro-D day for all SD43 schools and OSC is available. (2nd Pro-D for Parkland Elementary children only)

Program Highlights

This month we will be exploring hibernation and winter animals!



Reminders

- Happy New Year Everyone! We are happy to celebrate 2021 with Parkland Players Families!
- Center will re-open on the 4th of January!
The theme is hibernation and winter animals. All groups will be exploring various winter animals and creative ideas of hibernation!
- Extreme Weather Procedure Policy: Please review the Winter Extreme Weather Procedure Policy here: <http://parklandplayers.com/wp-content/uploads/2017/12/Extreme-Weather-Letter-to-Parents.pdf>
- Scholastic flyers have been sent through Himama. Our class code is RC149292.

Activities for Home and at School



Handprint Mitten Craft (IT)

This activity focuses on fine motor and sensory skills development in the early years. It sparks curiosity, which is essential for children staying motivated and excited to learn.

[Watch the video.](#)



Building Igloos (PSC)

This is a fun winter activity! The goal is to practice engineering and creative thinking skills. And have a lot of fun eating the marshmallows after!!

[Watch the video.](#)



Group Daycare children in their circle time.



IT children exploring light and shadow.



IT children mailing their letters to Santa.



Meadowbrook children painting a tree.

FOR ANY ENQUIRIES, PLEASE DO NOT HESITATE TO REACH OUT BY EMAIL OR PHONE.

1563 REGAN AVENUE. COQUITLAM, BC. V3J 3B7
T: 604.670.8830
WWW.PARKLANDPLAYERS.COM